



NH360 PACKAGED PUMPING SYSTEMS

NH360 Packaged Pumping Systems can be uniquely designed and customized to meet your needs for various markets such as Food & Beverage, Plumbing, Municipal, HVAC, Petrochemical, and Power Generation. Every package is factory built and tested to ensure the highest quality. Packages are available pre-wired, insulated, and with a factory-built enclosure to reduce installation time.

THE STELLAR DIFFERENCE

- SHORTER LEAD TIMES
- LESS ON-SITE CONSTRUCTION
- FACTORY-BUILT FOR QUALITY CONTROL
- ENHANCED SAFETY
- IN-HOUSE AUTOMATION & PARTS
- NATIONWIDE SERVICE
- OPERATION & MAINTENANCE CONTRACTS

TYPICAL COMPONENTS

- Standard packages up to 2800 GPM
- Factory tested
- Variable frequency drives
- Air separators, expansion tanks, suction diffusers
- Valves and instruments

CUSTOM SYSTEMS

- Custom dimensional requirements
- Custom controls systems
- Pre-wired
- Heat exchangers
- Factory insulated
- Stainless steel

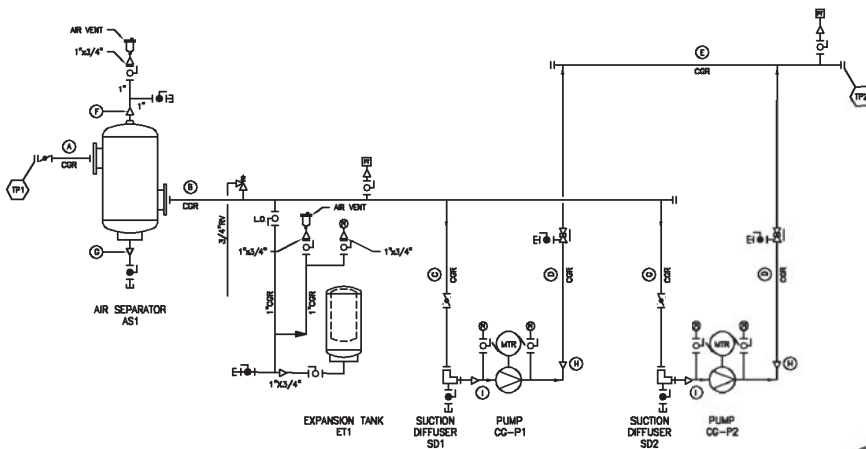




NH360 GLYCOL PUMP PACKAGES

NH360 Glycol Pump Packages are available in several standard models ranging from 25 – 2800 GPM.

MODEL NUMBER	PERFORMANCE			TIE IN POINTS		DIMENSIONS		
	GPM	MAX HP	FT HEAD	TP-1	TP-2	LENGTH (L)	WIDTH (W)	HEIGHT(H)
NH360-GPP-100	25-100	10	160	3"	3"	6'-6"	4'-0"	5'-2"
NH360-GPP-230	40-230	20	160	4"	4"	7'-8"	4'-0"	5'-11"
NH360-GPP-430	75-430	30	160	5"	5"	8'-0"	4'-0"	6'-3"
NH360-GPP-700	90-700	40	160	6"	6"	8'-5"	4'-6"	7'-4"
NH360-GPP-1250	150-1250	100	160	8"	8"	11'-0"	6'-3"	8'-2"
NH360-GPP-1950	250-1950	100	160	10"	10"	11'-6"	7'-2"	9'-2"
NH360-GPP-2800	350-2800	150	160	12"	12"	12'-4"	7'-7"	9'-11"



Right: 3D rendering of a CAD model produced using AutoCAD Plant 3D

Above: Flow diagram used to develop the CAD model

